

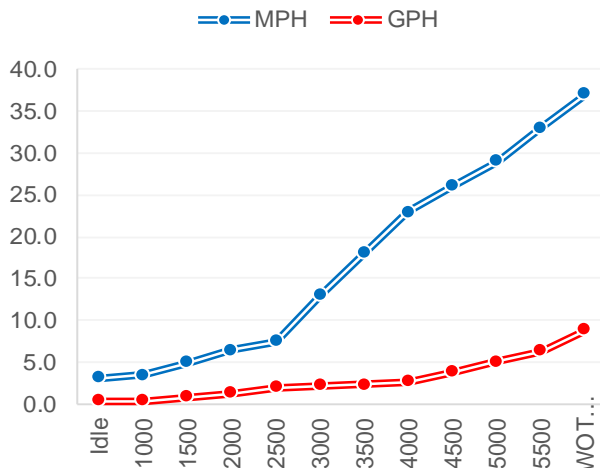


75-90 HP

Performance Data

RPM	MPH	GPH	MPG
Idle	3.10	0.40	7.75
1000	3.50	0.40	8.75
1500	5.00	0.80	6.25
2000	6.40	1.30	4.92
2500	7.50	2.00	3.75
3000	13.00	2.20	5.91
3500	18.00	2.30	7.83
4000	23.00	2.70	8.52
4500	26.00	3.80	6.84
5000	29.00	5.10	5.69
5500	33.00	6.30	5.24
WOT 6000	37.00	8.90	4.16

Accel 0-20 MPH
Time to Plane



Boat

Boat Manufacture	Alumacraft
Website	alumacraft.com
Model	165 Competitor SC
Length	16' 7"
Beam	87"
Dry Weight (lbs)	1040
Max HP	90
Fuel Cap. (gal)	20

Engine

Model	BF75 (L)
Horsepower	75
Displacement	1.5L I4
Weight (lbs)	359
Gear Ratio	2.33
Mounting Hole	#2
Prop Material	Stainless Steel
Diameter / Pitch	13.875 X 15 X 3
Honda Part #	58133-ZW1-A15HR

Test Conditions

No. of People	2
Fuel Load	6 gallons
Air Temperature	63 F
Test Conditions	variable
Elevation	Sea Level
Wind Velocity	9 mph
Test Date	2/10/2016

Data presented should be used as a guide. Actual results may vary due to changes in weather, water conditions, elevation and load. Honda reserves the right to change the specifications on this report or it's engines without notice

TRUE

5

YEAR LIMITED WARRANTY

The best warranty in the business.

Only Honda gives you a full, five years, non-declining warranty.

No strings. No catches. It's that simple.

marine.honda.com

© 2017 American Honda Motor Co., Inc